



YOU HAVE TO SEE THIS!

YOU HAVE TO SEE THIS!

SAEWA NEWSLETTER EDITION

#16

...Plans for the implementation of a facility that recovers energy from non-recyclable waste materials are moving forward.

The Southern Alberta Energy from Waste Association (SAEWA) held its annual general meeting (AGM) on April 24 at the Champion Community Hall. Representatives from more than 50 southern Alberta municipalities were in attendance to hear about SAEWA's strategy and performance updates from HDR Engineering, governance model developments from

"The people that we have engaged around the room with KPMG, HDR Engineering and Brownlee LLP shows the level of professionalism SAEWA wants to work with to bring credibility to our organization," said Kim Craig, Coaldale's mayor and chair of the SAEWA board of directors, during the presentation. A corporate governance model was proposed by Brownlee LLP employee John McDonnell, and it was approved in principle by all voting members in attendance

**NEWS LOCAL – as reported by Derek Wilkinson,
Vulcan Advocate
SAEWA project moves along at AGM
Tuesday, April 28, 2015 3:21:59 MDT PM**

SAEWA is transitioning from the planning stage into the more substantial stages of procurement for its proposed facility. The key component in that transition is the business plan. Once work has begun on the business plan, SAEWA will know how to proceed with the actual building of the facility, said Craig.

Jim McKay of HDR Engineering presented a wealth of information that needs to be considered by the partnering municipalities when it comes time to create and finalize the facility's business plan.

Affirmation of membership, levels of participation in the organization, and solid waste stream commitments by the municipalities are all "huge assets" in how SAEWA will proceed in the future, said Craig.

Levels of participation and waste commitments by the various municipalities will all play a part in the direction the facility takes in the future, he said. "This is where the rubber hits the road," said Craig, during an interview with the Advocate. The kind of waste contributed by each municipality is also very important.

"Now we have to go back and look at how much people really want to commit to the project and in that, we need a detailed waste stream analysis so we know exactly the composition of that stream, because that will drive what technology is used in the facility."

The amount of commitment from the partnering municipalities and their dedicated solid waste streams will govern what technology is used when the facility is built. In turn, that technology will then dictate what kind of output the facility creates in the form of energy. Steam and electrical energy are two of the main products that could be created when this new facility is operational and sold to energy purchasers, said Craig. The kind of energy that will be produced also relies heavily on the amount of interested energy purchasers are incorporated into the business plan.

Craig also said that there could be a possibility, again depending on the amount and type of solid waste coming into the facility, of generating byproducts such as ferrous materials that could be sold and recycled.

If combustion of the solid waste is the chosen method of dealing with the solid waste, that ash could also be sold to other landfills as cover or to cement plants for use in their products, he said.

Local support for the project has been "very good," said Craig. Craig was also quick to point out that Vulcan County played a big part in starting this project. He cited the Vulcan Business Development Society, the Town of Vulcan and Vulcan County as the forefathers of the project, having committed members to the initiative from its onset. "We're really pleased with their continued support of the project," he said. Some municipalities have declined membership in SAEWA for a variety of

reasons. In some cases, Craig believes it's because of the amount of money a landfill can generate if that particular municipality has an overabundance of land that can be used for dumping in the future.

“Realistically, it's very profitable to run a landfill when you can charge hefty tippage fees, especially if you're neglecting the total cost of a landfill including post closure and long-term environmental liability for the years after its decommission. “They don't do the full analysis of those costs and decide to continue with the unsustainable future of the landfill.”

Setting FORWARD – STRATEGY

The next priority initiative of the association is to move forward towards development of a high-level **business plan** that will charge the path in alignment with the Governance Plan Model – key elements of the business plan will include definition of the implementation process, waste stream analysis, site selection, prescribed technology, and a procurement process, also facilitated by a funding strategy.



AGM 2015 – REFLECTION

Chair, Craig welcomed members and guests from over 50 representative areas to Champion Community Hall to the SAEWA AGM 2015...thanking our special guests, past and present members elect, and featured presenters Jim McKay, HDR; John McDonnell, Brownlee LLP; and Derek Taylor, KPMG also taking a moment for key acknowledgement to the Province of Alberta for their pivotal funding support through the Regional Collaboration Project Fund, and Alberta Community Partnership Program which has made significant developments in moving forward the project possible! – also providing special regard to MD of Bighorn and the Town of Coaldale who have facilitated the funding partnerships.

2015 ELECTION RESULTS:

Executive (4):

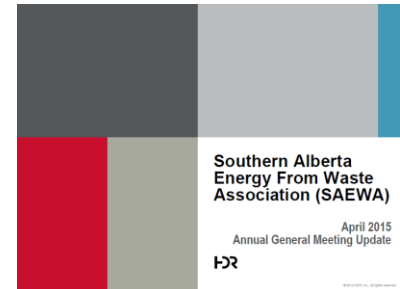
Chair, Kim Craig - Town of Coaldale
Vice Chair, Paul Ryan - MD of Bighorn
Secretary, Val Warnock – Town of Trochu
Treasurer, Ben Armstrong – Wheatland County

Directors (10):

Dennis Cassie – Town of Coalhurst
Ben Goetz – Village of Glenwood
Tom Grant – Town of Vulcan
George Piper – South ½ 40 Mile
Michel Jackson – Black Diamond
Ray Juska – Village of Duchess
Greg Sheppard – Special Areas
Joe Watson – Picture Butte
Tom White – Lethbridge County
Raphael Zea – Milo

FEATURED PRESENTATIONS:

HDR Corporation – Jim McKay

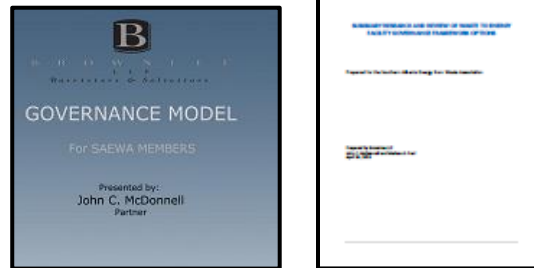


- Highlights of the 2015 AGM were HDR's presentation which provided an in-depth project engineering report to our members and stakeholder attendees.

- This key report containing engineering project developments to date also elaborated on the framing of the engineering process going forward in development of the high-level business plan.

BROWNLEE LLP – John McDonnell

Presented to the audience a final report on the Governance Model which was favorably responded to by the audience and members.



* The above presentations and reports, including all AGM 2015 documents can be reviewed via the website: www.saewa.ca

NEXT STEPS...

1. **GOVERNANCE** -
caption by John McDonnell,
Brownlee LLP

“With the presentation of the final report for governance recommendations, all Members of SAEWA need to determine who is committed to pursuing the next step in the process, which is the creation of the Municipal Waste Corporation. This will require that those participants to execute a Memorandum of Understanding whereby they will jointly cooperate in the creation of this matter. The MOU is a non-binding agreement whereby the participants will jointly pursue the investigation of how to proceed with all decisions regarding the Municipal Waste Corporation. The final decision as to how to best proceed with the Municipal Waste Corporation is up to each and every council.”
